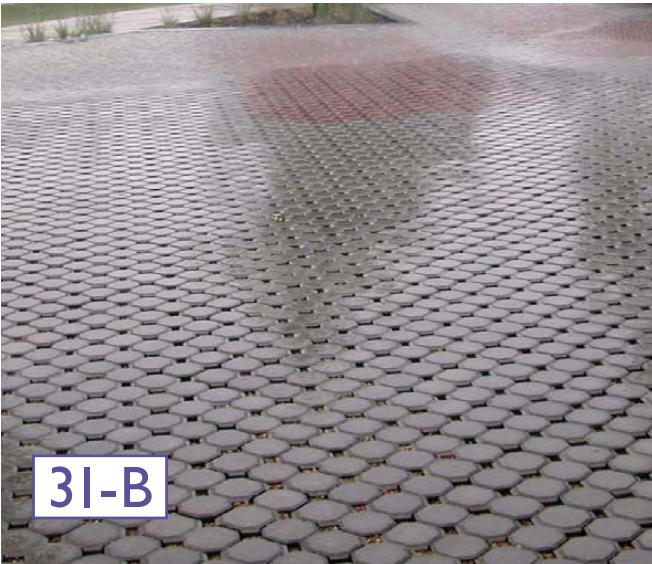




31-A



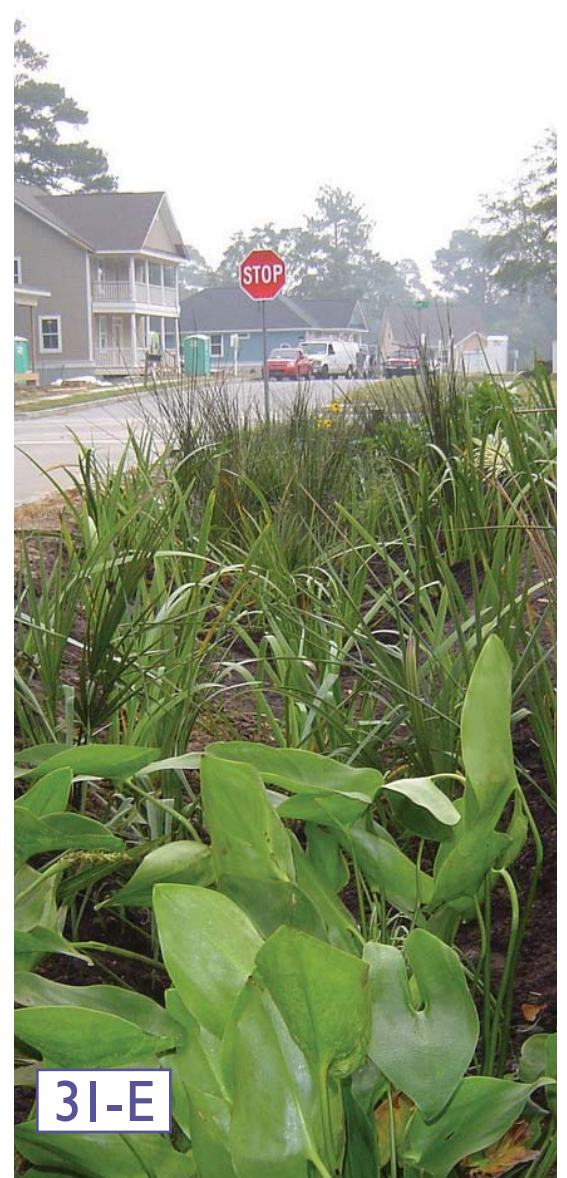
31-C



31-B



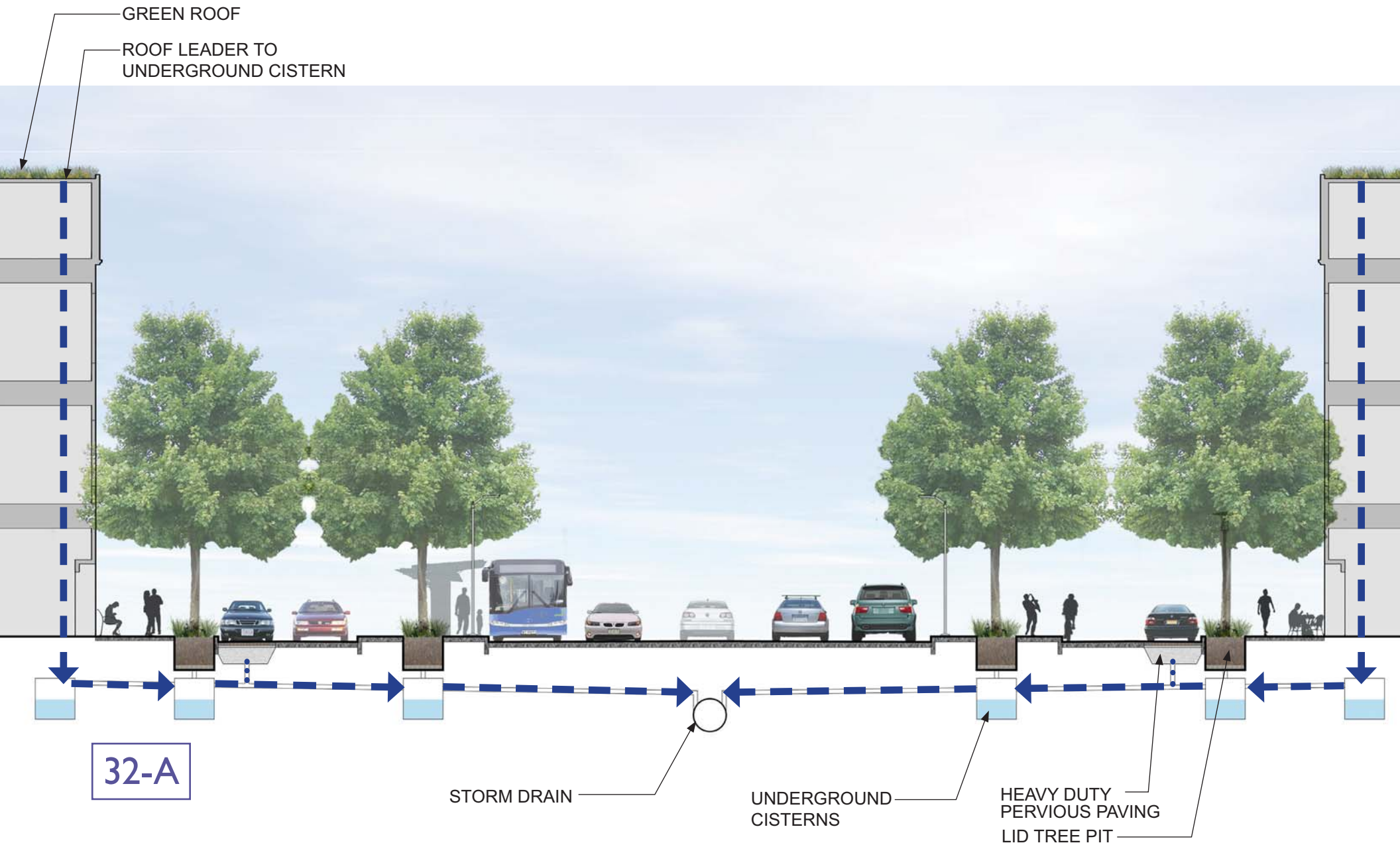
31-D



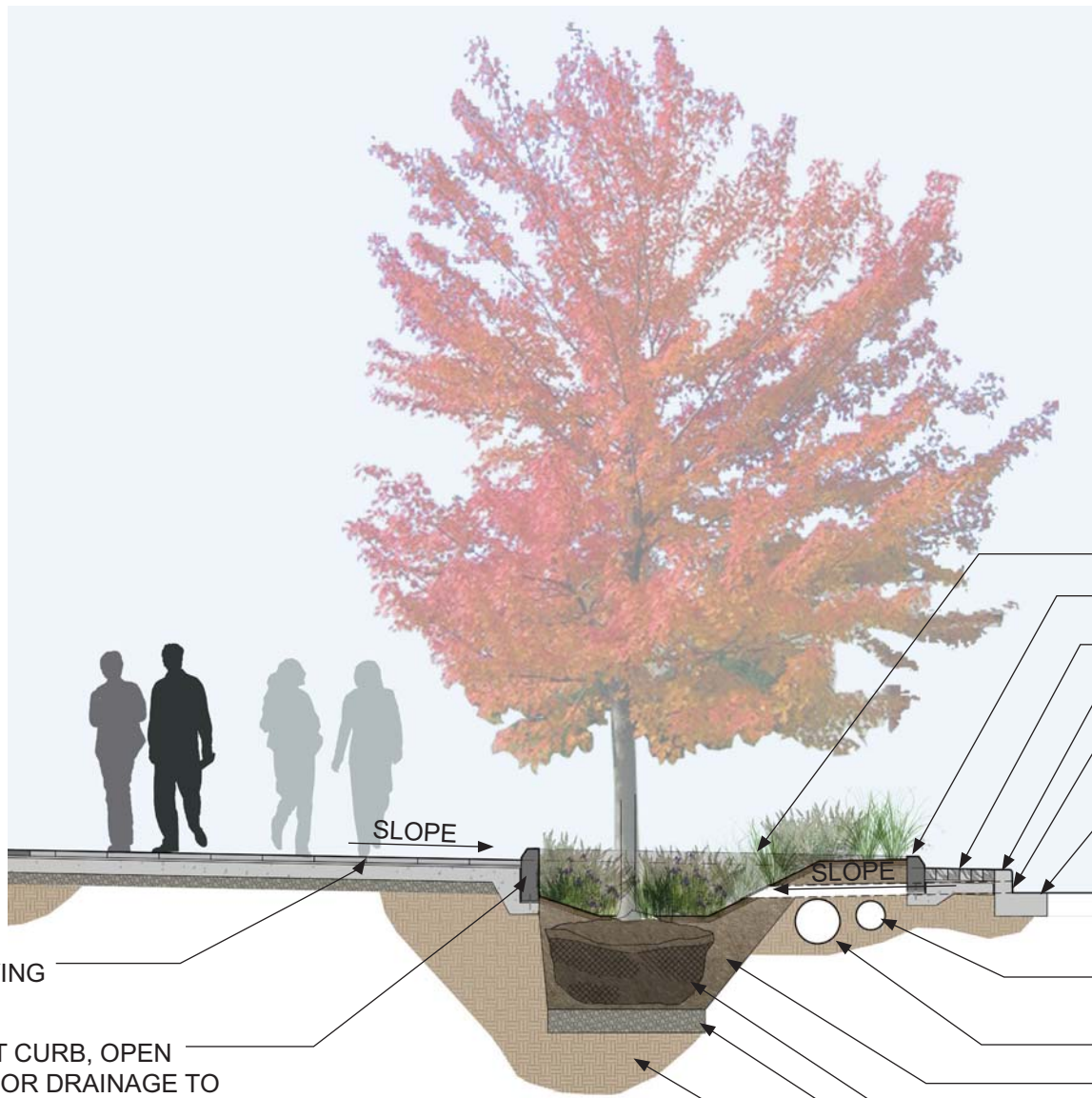
31-E



Streetscape Components: Stormwater Management



LID Treatment - New Construction



- PLANTER CURB BEYOND
- PRECAST CURB
- UNIT PAVING
- EXISTING CURB TO REMAIN
- PVC PIPE, CORE DRILLED THROUGH EXISTING CURB.
- ROADWAY SURFACE
- EXISTING UTILITIES TO REMAIN, FIELD VERIFY LOCATIONS AND DEPTHS
- EXISTING SUBGRADE
- PLANTING SOIL MIX
- TREE ROOT BALL
- CLEAN DRAINAGE AGGREGATE
- AMEND SUBSOIL UNDER DRAINAGE GRAVEL TO 12" DEPTH WITH ORGANIC COMPOST TO PROMOTE INFILTRATION

- UNIT PAVING
- PRECAST CURB, OPEN JOINTS FOR DRAINAGE TO TREE PIT

33-A



LID Treatment - Retrofit